

VEJARANOTM DELAMINATOR SYSTEM

The “WORLD’S FIRST” affordable corneal delaminating system for Keratoconus. Designed to improve results and prevent corneal perforations



Invented by World Class Surgeon Manuel Vejarano, M.D. of the famous Vejarano Laser Vision Center in Mexico City, Mexico the system has been successfully used on over 2,000 patients with 100% success.

Complete System Availability

Supplied with a short video and easy to read instructions the Vejarano Delaminating System™ is available with or without the Vejarano Diamond Keratoconus Knife available by contacting Imperial Medical Technologies.

Presented in its own "State of the Art" sterilization tray for rapid patient turn-around, the kit includes:

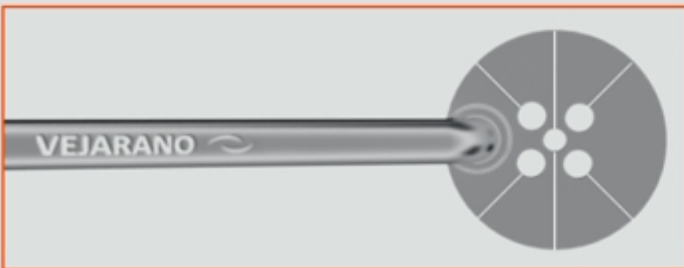
- 1 - Corneal Marker
- 1 - Corneal Pre Delaminator
- 1 - "Y" Spatula
- 2 - Dual Direction Delaminators
- 1 - "V" Glide Automatic Vacuum System
- 1 - Each, Inserter and Extractor



Photo courtesy of Manuel Vejarano, M.D.

Easy To Use

Following the standard Pre-Op Topography and Pachymetry the surgeon can use either his own surgical expertise and nomogram to plan the procedure, or for a small fee, submit the patient data to our team of experts who will expertly suggest and advise on the size and radius of the segments to be used as well as the location.



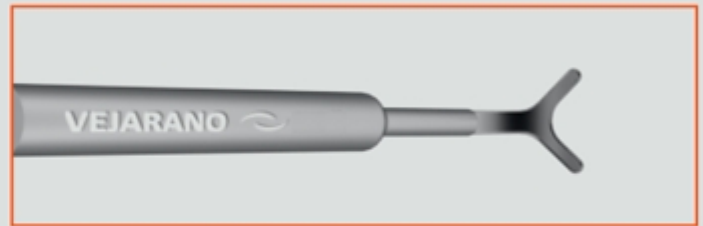
The Procedure

The system comes complete with detailed instructions that closely follow the standard surgical techniques used for

Keratoconus or High Myopic Corneal surgery.

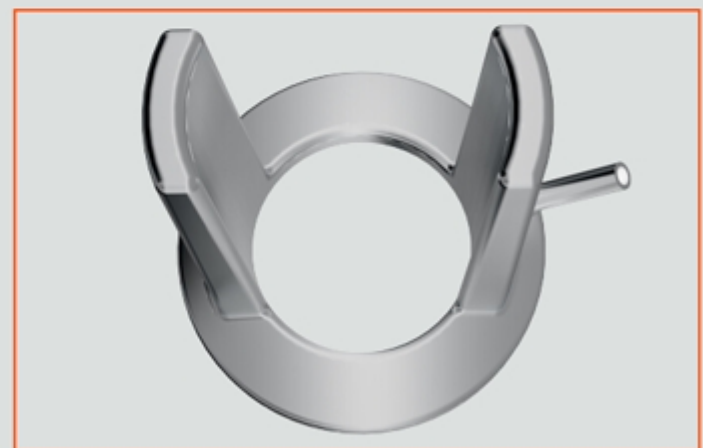
Once the visual axis is located, the cornea is marked and the site for the incision is formalized. Then, the incision is made to the prescribed depth, usually about 75% of the stromal depth which is indicated in the pachymetry. If the Vejarano Diamond Knife is used, the base of the tunnel will be easier to separate. If not, use a standard RK knife and carefully make the incision to the prescribed depth.

Next, the tissue is gently separated with the pre-delaminator spatula and a small cavity is introduced in each direction in preparation for the "Y" Bladed Spatula. Once the small cavity is started, extract the separator spatula and introduce the "Y" Blade Spatula in order to begin the delaminator tunnel in a clockwise and counter clockwise direction. Once the tunnels are prepared the Patent Pending "V" Glide Automatic Vacuum System can be gently placed on the cornea.



"V"- Glide System™

The "Secret" is the Patent Pending "V-Glide Positioning System"™ which maintains an even and continuous vacuum. After the disposable tubing and attached Leur locks are assembled and connected to the Vacuum, carefully place the "V" Glide instrument onto the surface of the Cornea aligned with the original markings. Press the Low Vacuum (50mmHg) switch or the High Vacuum (65mm Hg) switch. (Note: Amount of vacuum used is indicated by the surgeon's preference.) The V-Glide™ gently fixates the alignment ring onto the cornea and maintains the prescribed vacuum. The digital readout indicates both the amount of vacuum and the time the patient is under vacuum in order to provide safety for you and your patients.



Safely Create the Tunnel

The "V" Glide positioning tube allows for the surgeon to rotate the delaminator smoothly and easily thereby reducing the potential for a perforated cornea. Once the ring is fixated on the cornea, the "V" Spatula is inserted in either a clockwise or counterclockwise direction and the appropriate delaminator blade tip is placed below the spatula in order to introduce the tip

of the delaminator into the opening of the tunnel. Gently remove the "V" Spatula leaving the delaminator blade in the entry to the tunnel. Next carefully rotate the delaminator 180° creating a smooth and even tunnel. Reverse the rotation and extract the delaminator from the "V" Glide positioning tube.

Follow the same procedure in the opposite direction and use the same technique. Extract the delaminator from the "V" Glide positioning tube and turn "OFF" the vacuum. This will allow for an easy removal of the "V" Glide System from the cornea. Gently irrigate the eye if the protocol dictates and you are ready to insert KERATACx™, the World's Finest, "Patent Pending" Corneal Segments.



Superior Results Reported

Surgeons around the world report that patients experience no glare, halos, sparkles or starbursts commonly associated with intra-corneal implantations. They are designed to be gentle on the eye and the prompted one surgeon to state "...for the first time, my patients have a night life without aberrations, glare or sparkles!"

Easy to Clean

The Vejarano Delaminating System™ is packed in an auto-clave ready tray, with easy to follow USFDA, CE and ISO approved cleaning instructions. Manufacturer guarantees each system against all manufacture defects and workmanship.

Titanium or Stainless

Vejarano Delaminator Systems are manufactured from the finest medical grade Titanium or Stainless Steel and are built for years of trouble free service and should never need repair. If the Delaminator™ becomes bent or misaligned repairs are free of charge for the first repair exclusive of all shipping and handling.

Options

Extra hand pieces, Delaminator for Keratacx™, Keratacx SPT™ & Keratacx V™ and Vacuum System, contact us.



KERATACx™ Brand

Multiple segment styles are offered depending on the Corneal Topography and the dioptric correction required.

KERATACx Plus™ is our most popular segment and matches the size and indications of Kerarings™ and Ferrara Rings™ but without the reported halos, glare or sparkles many other segments produce.

KERATACx™ provides a smaller visual zone but produces the highest dioptric changes available today. An optional Delaminator must be purchased for KERATACx™ to insure a proper tunnel radius.

KERATACx SPT™ (Super Plus) is the 5.8mm to 6.0mm optical zone segment and also requires a different Delaminator to insure the proper tunnel radius.

KERATACx V™ invented in conjunction with Dr. Vejarano, offers the largest visual zone of 6.8mm to 7.0mm and is used when 4 segments are required. An optional Delaminator must be purchased to insure a proper tunnel radius.

Extensive Radius Selection

All KERATACx™ models are available in 45°, 90°, 120°, 160°, 210° and 320° radii which allows for precise dioptric corrections on all types of corneal typography.

Wide Range of Sizes

All Vejarano™ models are available in heights from one hundred microns (100µ) to three hundred fifty (350µ) in twenty five (25µ) increments. In addition all models have positioning holes at each end for easy manipulation.

Contact us: office@eye4vison.com
Web: www.eye4vision.com